



ADVANTAGES

- ✓ Multiprocess welding, simple to operate : Stick, Stick Pipe, LIFT TIG, MIG, Arc Gouging.
- ✓ Arc gouging up to 8mm (VANTAGE 400) & 10mm (VANTAGE 500).
- ✓ Downhill pipe welding mode. Excellent for cellulosic electrodes.
- ✓ Built-in "hot start" for easier starts and restrikes.
- ✓ Plenty of AC 50 Hz generator power : 3-phase 400V / 1 phase 230V (& 110V on the UK version).
- ✓ Reliable engine 4 cylinder, water cooled, 1500rpm Perkins Diesel engine.
- ✓ Compact case, lightweight.
- ✓ Stainless steel enclosure delivers added protection and durability.
- ✓ VRD™ (Voltage Reduction Device™) for added safety.
- ✓ Low noise to fit with new European norms.
- ✓ Innovative Service Access
- ✓ Truly meeting IEC 974-9 and CE standards
- ✓ 3 year full parts and labour warranty on welder (Engine is warranted separately by the manufacturer).

TAKE THE ADVANTAGE !

The Vantage® 400 CE and 500 CE are one of the most compact and powerful engine-driven welders / generators in the construction, pipe or rental fleet market today. They are also the most quiet, with a smooth running 4-cylinder Perkins® water-cooled diesel engines.

Use these multi-process welders for Stick welding with a large variety of electrodes, Lift TIG welding, CV welding with shielding gas or Innershield wires, and arc gouge up to 8 mm carbons for Vantage 400 and 10 mm carbons for Vantage 500.

You'll value the superior arc performance delivered by exclusive Lincoln Chopper Technology.

You'll also appreciate VRD™ (Voltage Reduction Device™), which reduces OCV (open circuit voltage) in the CC-Stick weld mode for added safety.

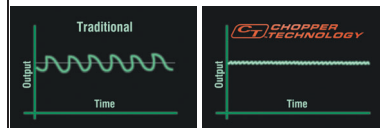
These models effectively generate

high auxiliary power on 3-phase or 1-phase AC to power your lights, grinders, power tools, Inverters, etc...

Last but not least, they are housed in a rugged, low maintenance stainless steel enclosure and loaded with many innovative service features.

That all totals up to an excellent value!

WHAT IS CHOPPER TECHNOLOGY?



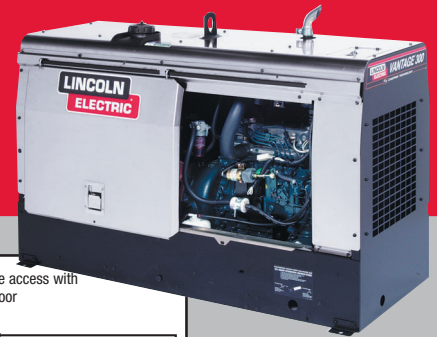
Traditional weld control is more variable around the desired output.

Chopper Technology delivers extremely fast response for tighter output control.

Patented and award-winning Lincoln Chopper Technology delivers superior DC arc welding performance for general purpose stick, Downhill Pipe, DC TIG, MIG, cored-wire and arc gouging.

Benefits of Chopper Technology include:

- Easy arc starting
- Smooth arc action
- Low spatter levels
- Excellent bead appearance



Single-side engine access with lockable siding door

TECHNICAL SPECIFICATIONS

Product name	Item number	Rated output	Output range	AC generator power	AC generator receptacles	Weight	Dimensions H x W x L (mm)
VANTAGE 400 CE	K2502-2	350A/34V@100%*	30-400A	13,2 KW	400V-3ph (x1 CE & UK) 230V-1ph (x2 CE / x1 UK)	560 kg	913x642x1524
VANTAGE 400 CE (UK)	K2502-1	400A/30V@60%					
VANTAGE 500 CE	K2503-2	400A/36V@100%*	30-500A	17 KW	110V-1ph (x1 UK only)	570 kg	
VANTAGE 500 CE (UK)	K2503-1	450A/38V@60%					

* IEC rating

ENGINE SPECIFICATION

Product name	Model	Description	Horse power & Displacement	Operation speeds (rpm)	Fuel consumption (l/hr)	Noise	Capacities (l)
VANTAGE 400	Perkins 404C-22	4 cylinders 4 cycles Water cooled	28HP@ 1500 rpm 2200 cm3	Full load : 1500 Low idle : 1200	4,81 1,10	Sound power: 96 Lwa*	Fuel : 57 Oil : 10,6
VANTAGE 500	Perkins 404C-22 Turbo	12V electric start Dry type air cleaner Fuel filter with water separator (Turbo for V500)	38HP 1500 rpm 2200 cm3	Full load : 1500 Low idle : 1200	6,50 1,16	Sound level : 71dBA @7m	Coolant : 7,6

* 2006 standards

ACCESSORIES

Designation	Item number
Undercarriage for highway towing, installed	Consult us
2-wheel yard trailer + lunette eye hitch	K953-1 + K958-2
4-wheel steerable yard trailer	K767-2
Security kit automatic Chalwyn air valve	Consult us
Security kit automatic Chalwyn fuel valve	Consult us
Spark arrestor kit	K903-1
TIG HF option (V270T + storage box)	Consult us
Remote output control - 15m	K10095-1-15M
15m-extension cable for remote ctrl box	K10398
Terminal / twist mate adapter (2 pcs necessary)	K10376

WHAT IS VRD™ ?

The VRD™ (Voltage Reduction Device™) provides additional safety in the CC-Stick weld mode, especially when working in an environment with a higher risk of electrical shock such as wet areas and hot, humid sweaty conditions. The VRD™ reduces the OCV (open circuit voltage) at the welding output terminals while not welding to less than 32 volts DC. The VRD is activated by flipping a toggle switch inside the machine to the "ON" position. Indicator lights monitor the voltage: green for less than 32 volts while not welding, and either red (greater than 32 volts) or green while welding, depending on the actual voltage of the arc.

Other weld modes when VRD™ is on:
 Downhill Pipe – There is no output.
 CV-Wire – OCV is not reduced.
 Touch Start TIG – No difference in operation. TIG is normally a low voltage (less than 32 volts) operation.



VRD™ portion of nameplate with green light on.



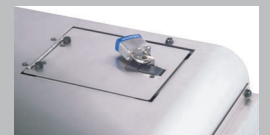
Fuel, oil pressure and engine temperature gauges help you monitor performance



Convenient slide-out battery drawer below control panel



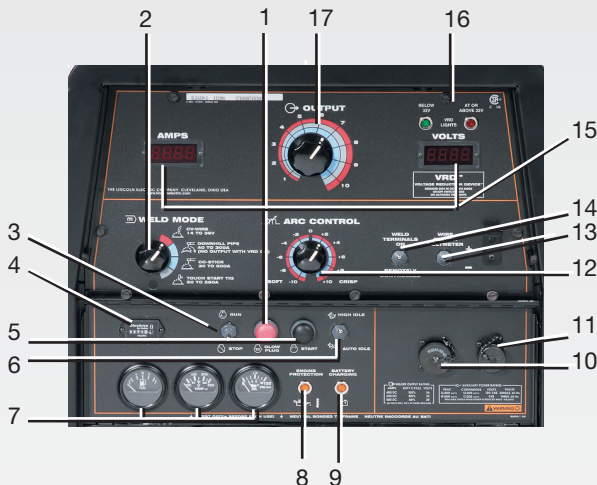
Output automatically switches to remote mode when remote device is connected



Patent-pending latched and lockable radiator cap cover



Handy oil drain valve and tube makes oil changes easy



- Glow Plug Button
- Weld Mode Selector Switch
- Run/Stop Switch
- Hour Meter
- Start Push Button
- Engine Idler Switch
- Fuel Level, Engine Temperature, Oil Pressure Gauges
- Engine Protection Light
- Engine Battery Charging Light
- 14-Pin Wire Feeder Connector
- 6-Pin Remote Control Connector
- Arc Force & Inductance/Pinch Ctrl Dial
- Welding Terminals Control Switch
- Wire Feeder Voltmeter Polarity Switch
- Digital Amps and Volts Output Meters
- VRD Indicator Lights
- Output Control Dial

United Kingdom: Lincoln Electric (UK) Ltd.
Tel: +44 114 287 2401 Fax: +44 114 287 2582

Belgium: Lincoln Smitweld Belgium
Tel: +32 2 377 00 71 Fax: +32 2 378 18 77

France: Lincoln Electric France SAS
Tel: +33 232 11 40 40 Fax: +33 232 11 40 11

Germany: Lincoln Smitweld G.m.b.H
Tel: +49 201 896 280 Fax: +49 201 896 2831

Italy: Lincoln Electric Italia, SRL
Tel: +39 010 754 111 Fax: +39 010 754 1150

The Netherlands: Lincoln Smitweld B.V.
Tel: +31 24 352 29 11 Fax: +31 24 352 22 02

Denmark: Lincoln Electric Nordisk
Tel: +45 86 26 51 00 Fax: +45 86 26 51 50

Spain: Lincoln KD, Sa
Tel: +34 93 685 9600 Fax: +34 93 685 9610

Turkey: A.S. Kaynak
Tel: +90 216 377 30 90 Fax: +90 216 377 00 00

Poland: Lincoln Electric Bester S.A.
Tel: +48 746 46 1100 Fax: +48 746 46 1082

Other countries: Lincoln Electric Europe B.V.
Tel: +31 24 352 29 27 Fax: +31 24 352 29 29

Your Lincoln Electric Distributor:

LINCOLN® ELECTRIC

www.lincolnelectriceurope.com